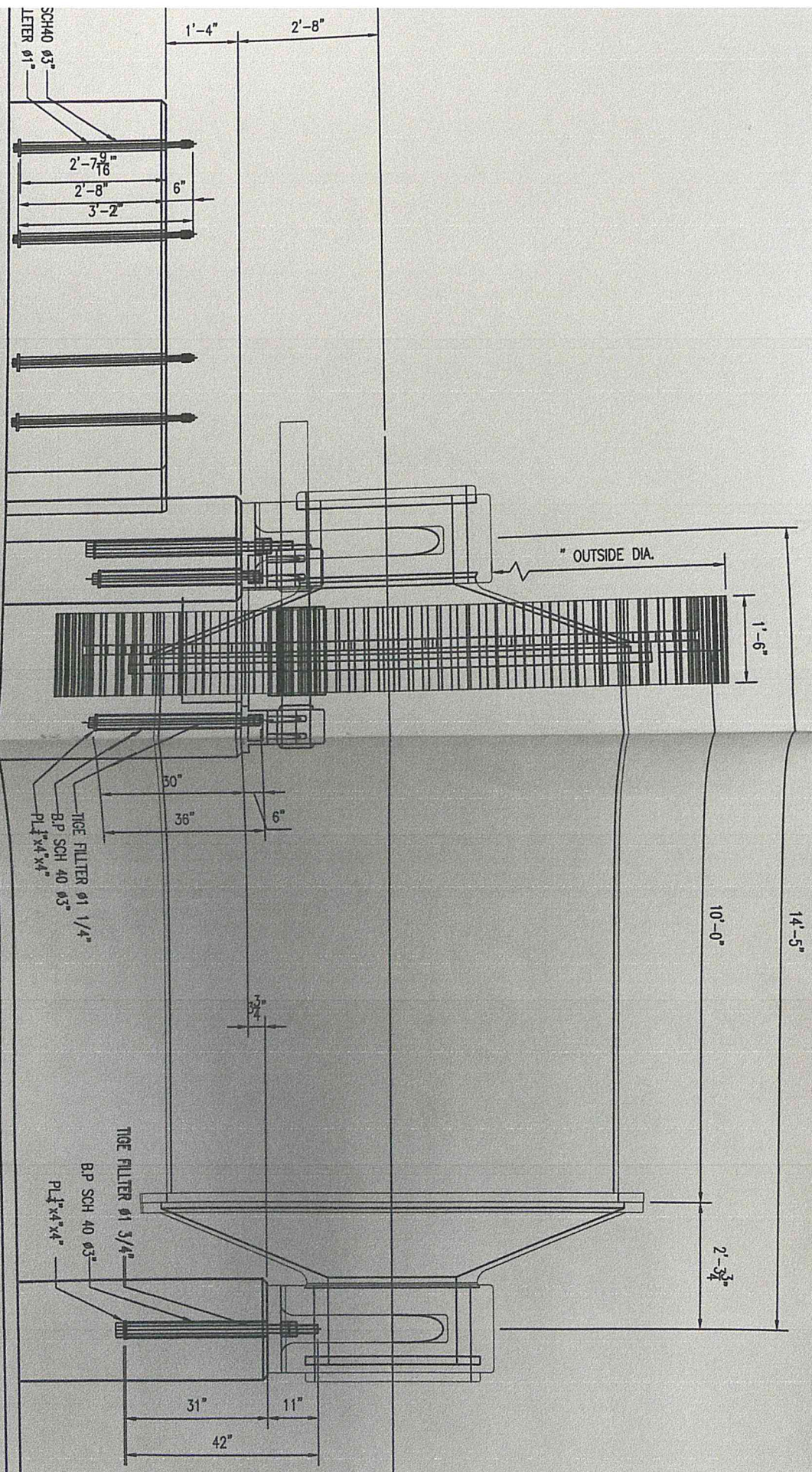
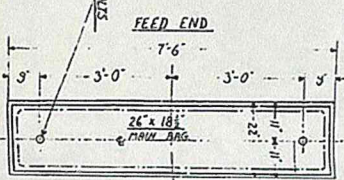


VUE EN ELEVATION

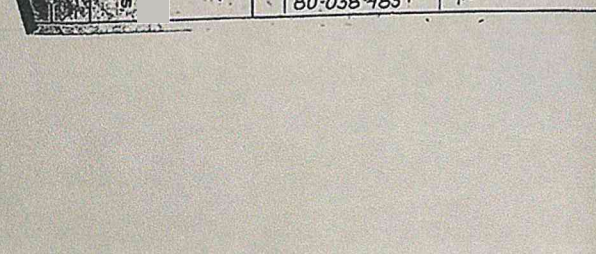
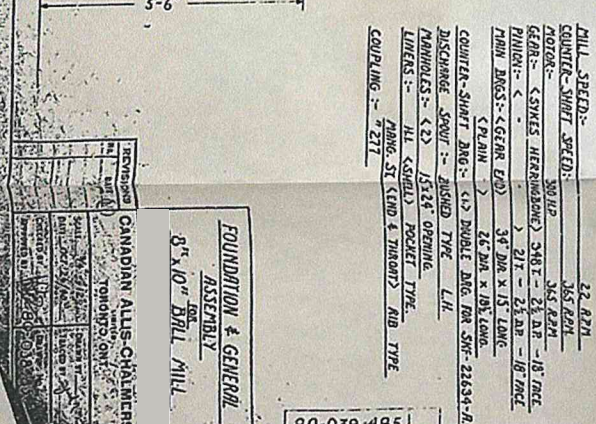
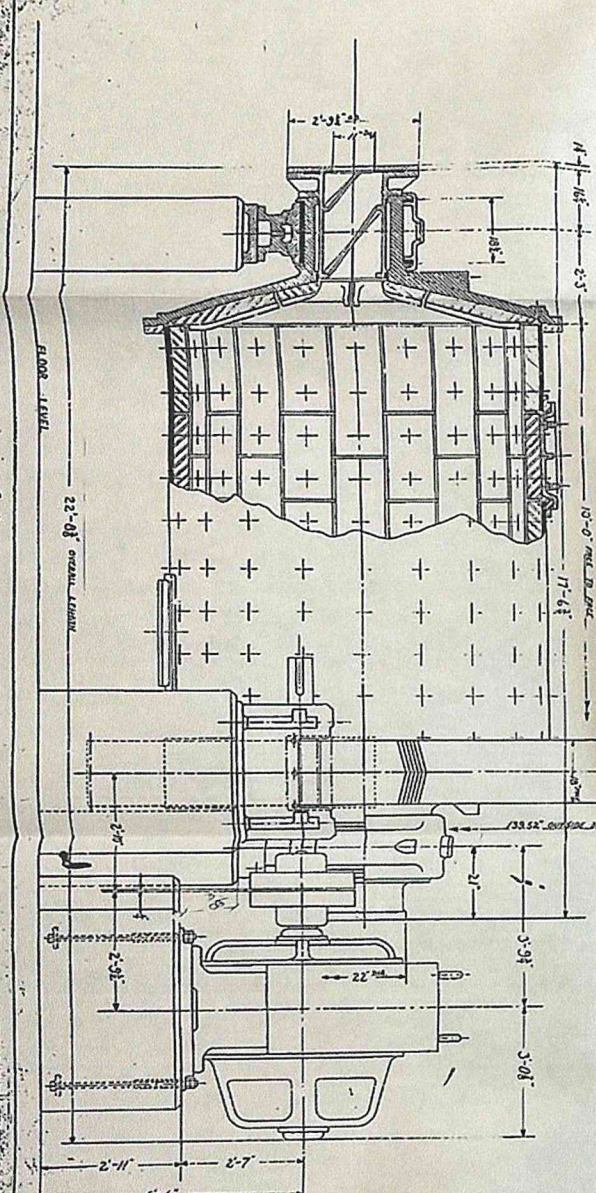
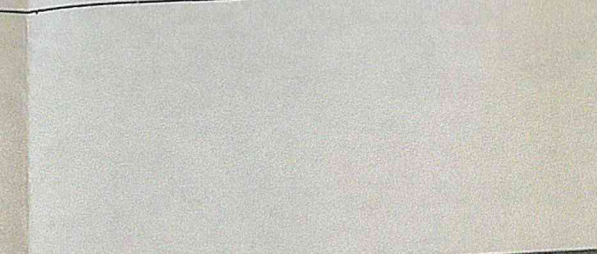
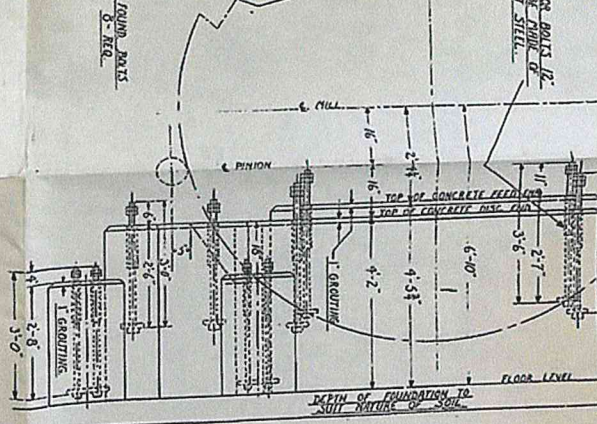
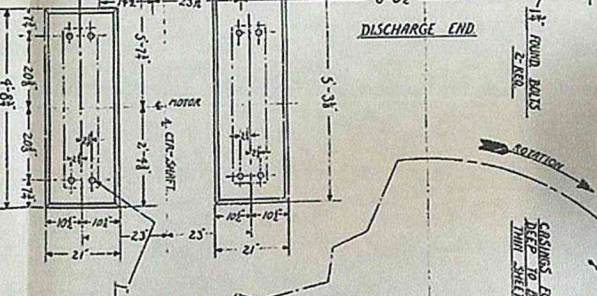
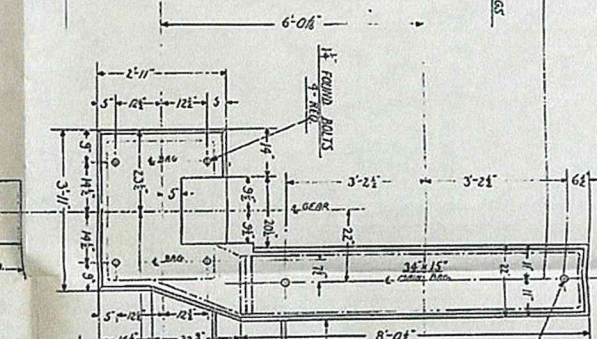


NOTE:-
 THE SPACE BETWEEN TRIMMINGS & TRIMMING LINES ON BOTH FEED AND DISCHARGE ENDS TO BE EQUAL. THE JUNE END OF TRIMMERS TO BE CHECKED WITH WHITE LEAD & BALLOON AND LINERS END OF LINERS TO BE CHECKED.



- MILL - SERIAL No 820 - S.C. 339
- 1. FEED
 - 2. DISCHARGE
 - 3. MAIN BEARING - CAP
 - 4. SHELL
 - 5. FEED TRIMMING LINER
 - 6. DISCHARGE TRIMMING LINER
 - 7. FEED TRIMMING LINER
 - 8. DISCHARGE TRIMMING LINER
 - 9. PINION
 - 10. GEAR
 - 11. PINION
 - 12. GEAR
 - 13. PINION
 - 14. GEAR
 - 15. PINION
 - 16. GEAR
 - 17. PINION
 - 18. GEAR
 - 19. PINION
 - 20. GEAR
 - 21. PINION
 - 22. GEAR
 - 23. PINION
 - 24. GEAR
 - 25. PINION
 - 26. GEAR
 - 27. PINION
 - 28. GEAR
 - 29. PINION
 - 30. GEAR
 - 31. PINION
 - 32. GEAR
 - 33. PINION
 - 34. GEAR
 - 35. PINION
 - 36. GEAR
 - 37. PINION
 - 38. GEAR
 - 39. PINION
 - 40. GEAR
 - 41. PINION
 - 42. GEAR
 - 43. PINION
 - 44. GEAR
 - 45. PINION
 - 46. GEAR
 - 47. PINION
 - 48. GEAR
 - 49. PINION
 - 50. GEAR
 - 51. PINION
 - 52. GEAR
 - 53. PINION
 - 54. GEAR
 - 55. PINION
 - 56. GEAR
 - 57. PINION
 - 58. GEAR
 - 59. PINION
 - 60. GEAR
 - 61. PINION
 - 62. GEAR
 - 63. PINION
 - 64. GEAR
 - 65. PINION
 - 66. GEAR
 - 67. PINION
 - 68. GEAR
 - 69. PINION
 - 70. GEAR
 - 71. PINION
 - 72. GEAR
 - 73. PINION
 - 74. GEAR
 - 75. PINION
 - 76. GEAR
 - 77. PINION
 - 78. GEAR
 - 79. PINION
 - 80. GEAR
 - 81. PINION
 - 82. GEAR
 - 83. PINION
 - 84. GEAR
 - 85. PINION
 - 86. GEAR
 - 87. PINION
 - 88. GEAR
 - 89. PINION
 - 90. GEAR
 - 91. PINION
 - 92. GEAR
 - 93. PINION
 - 94. GEAR
 - 95. PINION
 - 96. GEAR
 - 97. PINION
 - 98. GEAR
 - 99. PINION
 - 100. GEAR

NOTE:-
 FOUNDATION BOLTS & BOLT CASKINGS AND SUBSTITUTES BY CANADIAN ALUM. CO. CANADA, 1777



MILL SPEED:-
 22.8211
 GEAR - 30 HP
 GEAR - 36.8211
 GEAR - 38.8211
 GEAR - 40.8211
 GEAR - 42.8211
 GEAR - 44.8211
 GEAR - 46.8211
 GEAR - 48.8211
 GEAR - 50.8211
 GEAR - 52.8211
 GEAR - 54.8211
 GEAR - 56.8211
 GEAR - 58.8211
 GEAR - 60.8211
 GEAR - 62.8211
 GEAR - 64.8211
 GEAR - 66.8211
 GEAR - 68.8211
 GEAR - 70.8211
 GEAR - 72.8211
 GEAR - 74.8211
 GEAR - 76.8211
 GEAR - 78.8211
 GEAR - 80.8211
 GEAR - 82.8211
 GEAR - 84.8211
 GEAR - 86.8211
 GEAR - 88.8211
 GEAR - 90.8211
 GEAR - 92.8211
 GEAR - 94.8211
 GEAR - 96.8211
 GEAR - 98.8211
 GEAR - 100.8211

FOUNDATION & GENERAL ASSEMBLY
 8" x 10" DIAL MILL

80-038-485